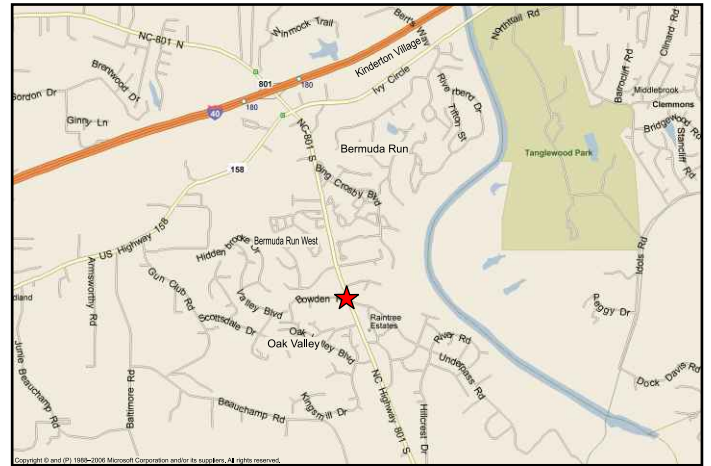


Office Site Bermuda Run/Advance, NC

.745 A ± Zoned HB-S

\$125,000

**Restricted to Office Use
Site Plan Available
Surveyed 2005
Located at Corner of
Bowden & NC 801
Between Bermuda Run
& Oak Valley**



Marketed by:

Ellen Moore

336-761-5909 office

336-414-9000 cell

email: ellen.moore@cbctriad.com

Visit www.ekmoore.com



TRIAD, REALTORS

285 S. Stratford Road
Winston-Salem, NC 27103